

# FOR LEASE

---

## 2000 EAST CARSON

---

Beautifully functional office space that combines a historic setting with modern design and technology.

**3 SUITES AVAILABLE**



# UNIQUE OFFICE SUITES WITH OUTDOOR DECK

## Perfect Location:

Just minutes from Downtown Pittsburgh, hospitals and universities.

## Spectacular Outdoor Space:

Outdoor roof top deck with panoramic views for staff and colleagues to enjoy.

## Abundant Parking Nearby:

Surrounded by on-street parking and off-street parking lots.

## Move-In Ready:

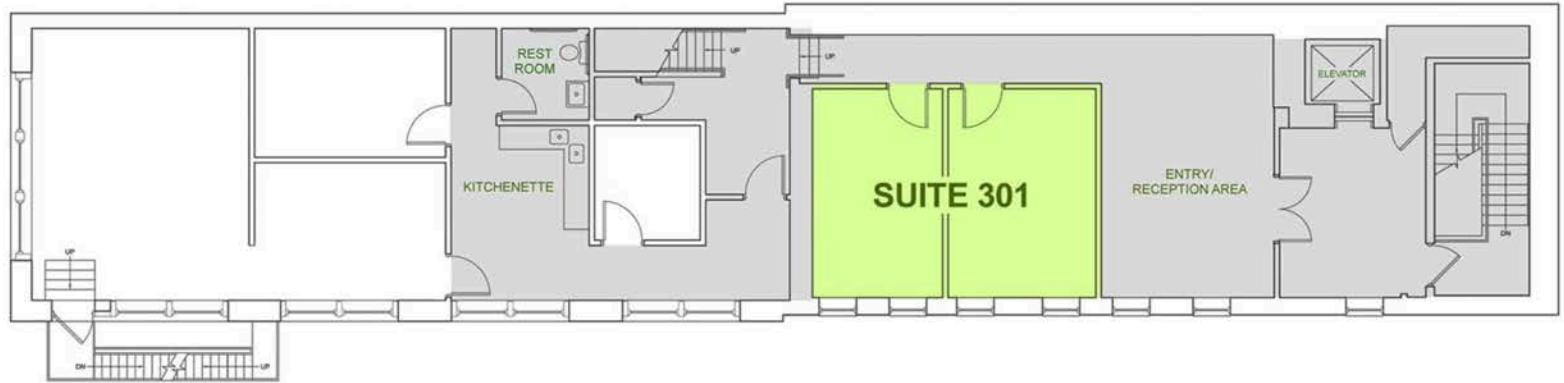
Get your business up and running quickly in right-sized office suites

2000 EAST CARSON ST, PITTSBURGH, PA 15203

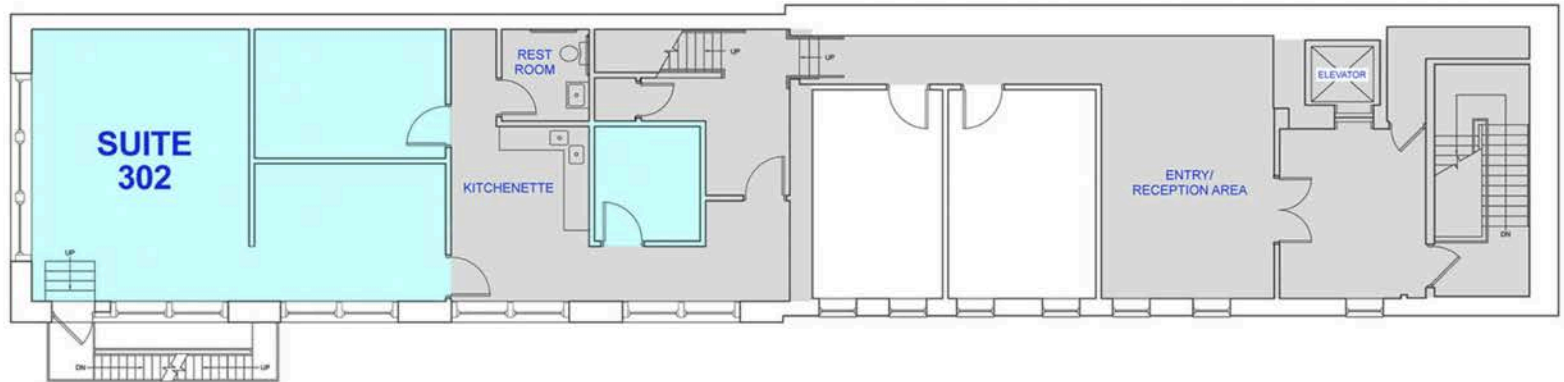


# 3 SUITES AVAILABLE

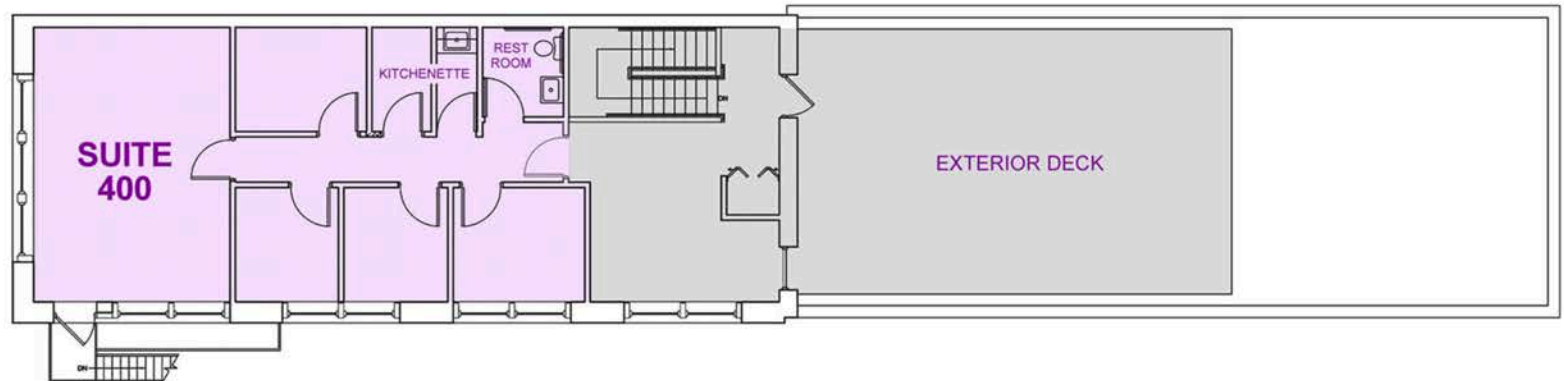
**Suite 301**  
Third Floor  
650 RSF  
\$980/month



**Suite 302**  
Third Floor  
1,250 RSF  
\$1,840/month

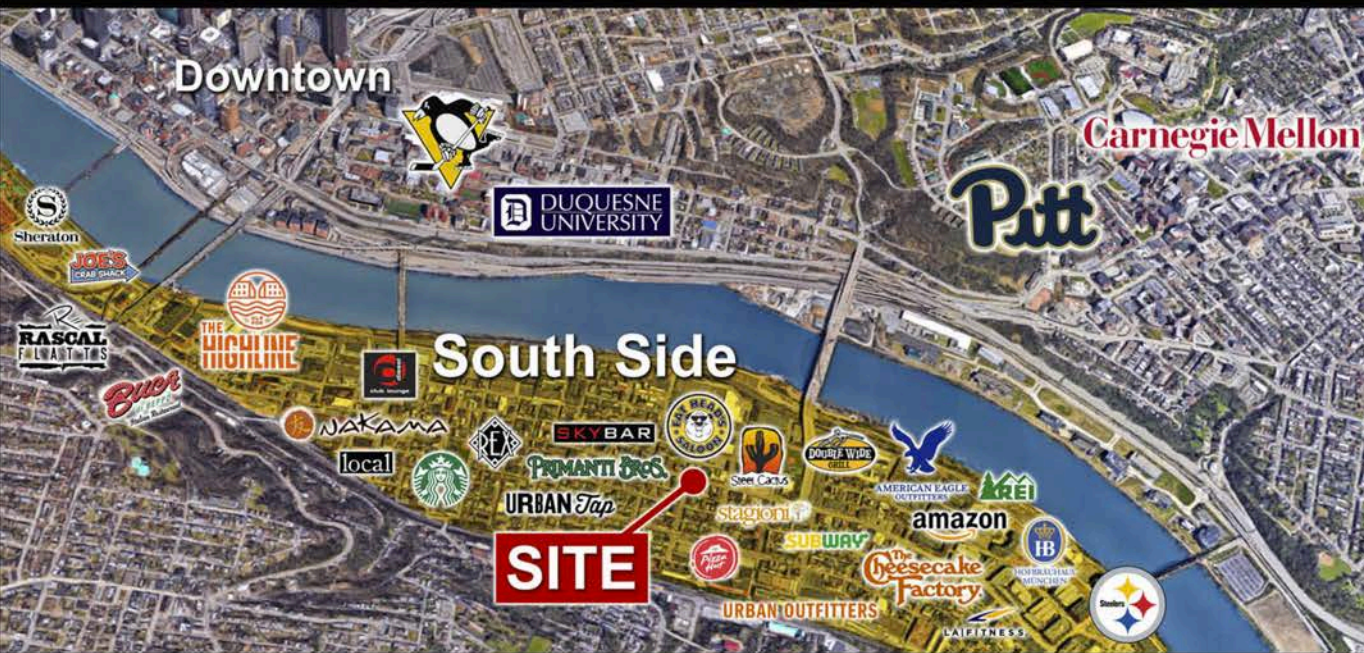


**Suite 400**  
Fourth Floor  
1,600 RSF  
\$2,320/month





## JOIN THE SOUTH SIDE, ONE OF PITTSBURGH'S MOST ACTIVE AND THRIVING NEIGHBORHOODS



- Local population density over 100,000 people and the daytime worker population within 3-5 miles is over 200,000 people.
- Less than five miles from eight universities with over 75,000 students and 18,000 faculty.
- World headquarters for American Eagle Outfitters and the Pittsburgh Steelers.
- Quick drive from Downtown, Oakland Shadyside and Squirrel Hill.
- Thousands of apartment units in South Side and a major new hotel/apartment project coming soon!





**five oaks**  
DEVELOPMENT

[www.fiveoaksrealty.com/2000-east-carson-street](http://www.fiveoaksrealty.com/2000-east-carson-street)

Contact us for more information or to schedule a tour:

Email: [info@fiveoaksrealty.com](mailto:info@fiveoaksrealty.com)

Phone: 1-877-348-3625

**Brokers welcome**