

The image is a composite advertisement for office space. On the left, a dark blue semi-transparent overlay contains white text. On the right, a photograph shows a modern office interior with large windows overlooking a city skyline. The office space is empty, featuring a grey carpet and a red wall. The city view includes a prominent blue skyscraper and other urban buildings under a cloudy sky.

FOR LEASE

**SOLOF BUILDING
OFFICE SPACE**

Beautifully functional
office space that combines
a historic setting with
modern design and
technology.

UNIQUE OFFICE SPACE IN HISTORIC BUILDING

2,600 RSF @ \$14.25 PSF

Perfect Location:

Just minutes from Downtown Pittsburgh, hospitals and universities.

The Right Tone:

Professional space with high-end finishes that will impress clients.

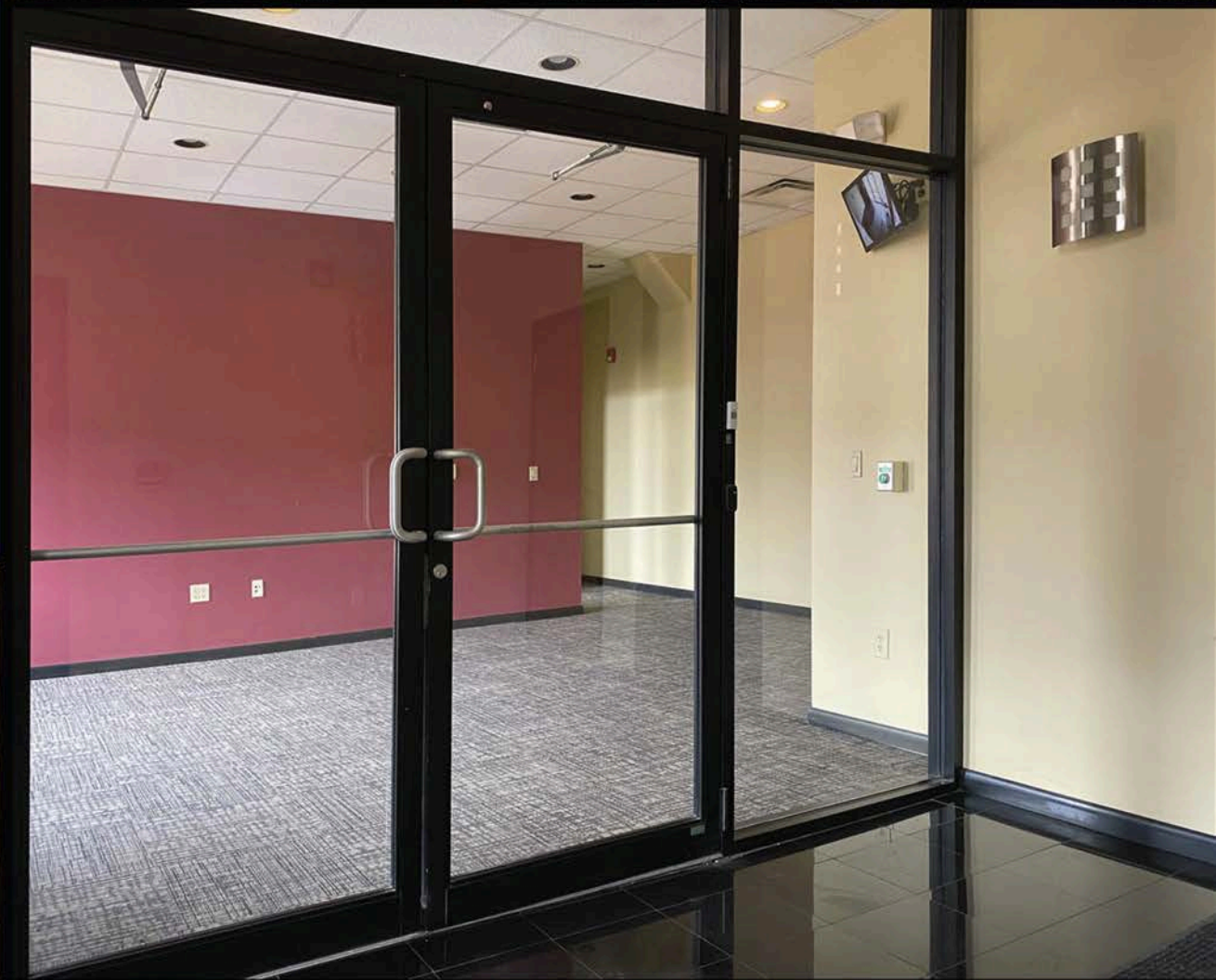
Move-In Ready:

Get your business up and running quickly in right-sized office space with built-ins and wiring.

Abundant Parking Nearby:

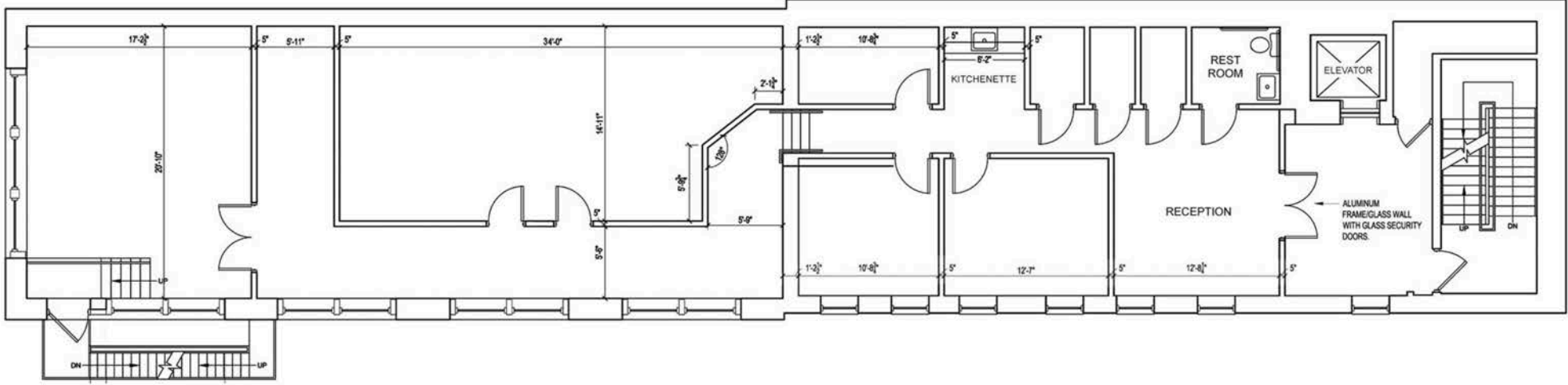
Surrounded by on-street parking and off-street parking lots.

2000 EAST CARSON ST, PITTSBURGH, PA 15203



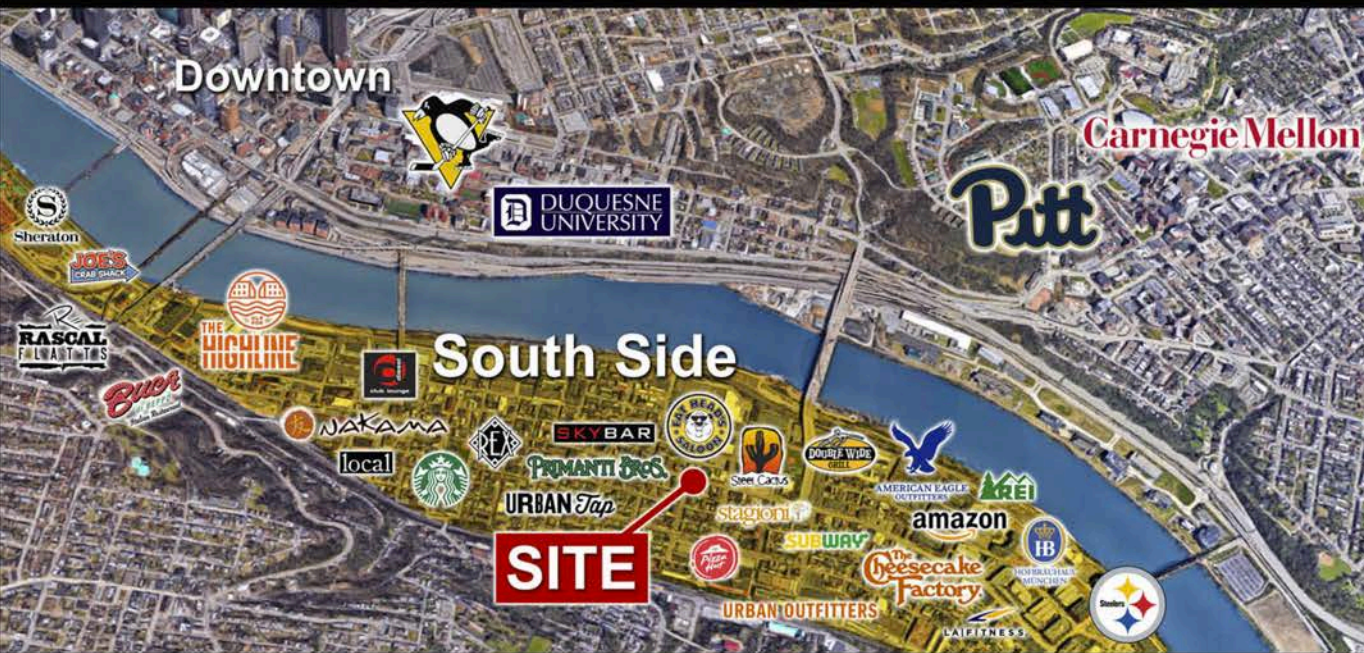
SUITE 200

Second Floor • 2,600 RSF





JOIN THE SOUTH SIDE, ONE OF PITTSBURGH'S MOST ACTIVE AND THRIVING NEIGHBORHOODS



- Local population density over 100,000 people and the daytime worker population within 3-5 miles is over 200,000 people.
- Less than five miles from eight universities with over 75,000 students and 18,000 faculty.
- World headquarters for American Eagle Outfitters and the Pittsburgh Steelers.
- Quick drive from Downtown, Oakland Shadyside and Squirrel Hill.
- Thousands of apartment units in South Side and a major new hotel/apartment project coming soon!





five oaks
DEVELOPMENT

Contact us for more information or to schedule a tour:
Phone: 1-877-348-3625

Brokers welcome